

The Original
Snoopy

Sno-Cone Maker INSTRUCTIONS

WARNING:
CHOKING HAZARD - Small parts.
Not for children under 3 years.

Ages: 4-Adult

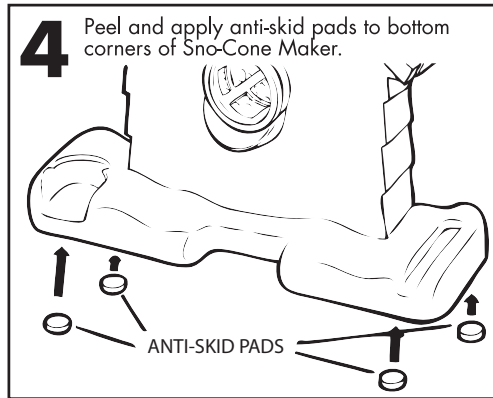
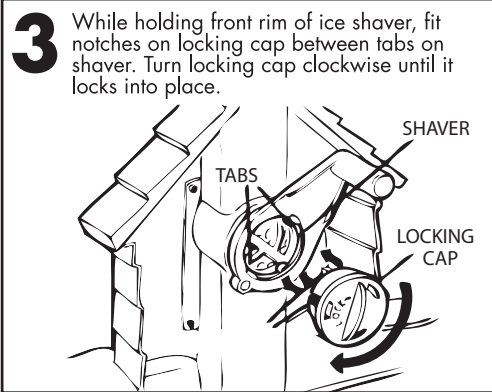
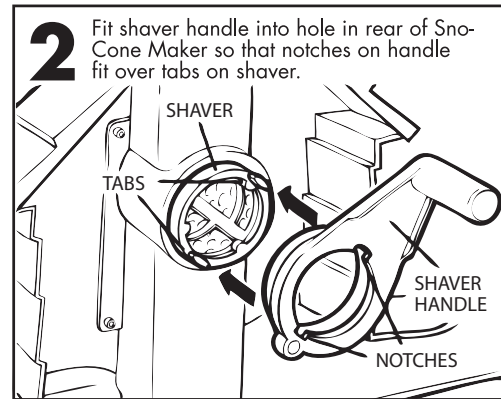
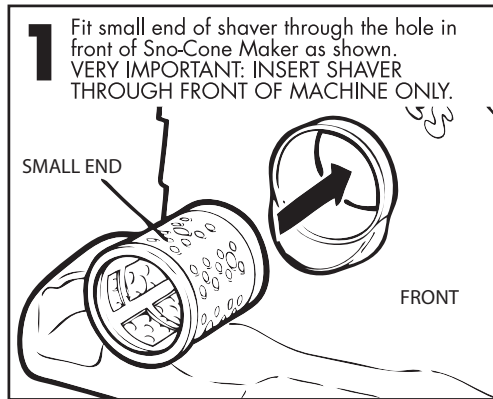
NOTE: Read this entire instruction sheet before using this product. **Adult supervisions may be necessary for younger children.**

Get ready for a delicious frozen treat with your SNOOPY Sno-Cone Maker. It turns ordinary ice into snow! Just follow the instructions below and enjoy!

Before you start, be sure to wash all parts of the Sno-Cone Maker thoroughly in warm water.

DO NOT WASH THE SNOOPY SNO-CONE MAKER IN DISHWASHER OR IN HOT WATER.

THE PRODUCT INCLUDES: Sno-Cone Maker, shaver, handle, locking cap, Snoopy ice pusher, Snowman syrup bottle with cap, flavoring mix packet, paper cups, shovel scoop, labels, anti-skid pads.



HOW TO MAKE FLAVORING

1. Combine 1 cup of sugar (to taste), $\frac{1}{2}$ cup of water and 1 envelope of flavoring mix in a mixing bowl. Stir ingredients until sugar and flavoring are completely dissolved.
2. Pour syrup carefully into Snowman syrup bottle. Fit syrup bottle top onto Snowman syrup bottle. Be sure bottle top is on securely. **DO NOT FILL BOTTLE ABOVE NECKLINE.**

HOW TO MAKE SNO-CONES

1. Drop ONE ice cube into the ice chute. Fit SNOOPY into the top of the ice chute with his feet facing forward as shown. VERY IMPORTANT: SNOOPY MUST BE INSERTED WITH HIS FEET FACING FORWARD. USE ONLY 1 ICE CUBE AT A TIME.
2. Turn shaver handle clockwise about 6 times without applying pressure on SNOOPY. Now, while still turning the handle, gently push down on SNOOPY and ice shaving will begin. VERY IMPORTANT: PUSHING DOWN ON SNOOPY BEFORE TURNING SHAVER HANDLE MAY CAUSE JAMMING AND DAMAGE TO THE SHAVER.
3. Once you have enough ice shavings to make a Sno-Cone, use the scoop to shovel ice shavings into one of the paper cups.
4. Squeeze Snowman syrup bottle to sprinkle flavoring mix over the ice shavings until saturated. Now, you're ready to enjoy!

CLEANING YOUR SNO-CONE MAKER

To clean your Sno-Cone, rinse with warm (not hot) water and wipe dry. If further cleaning is desired, remove the shaver handle from the machine. After each use, shake out any water or ice particles left in the machine.

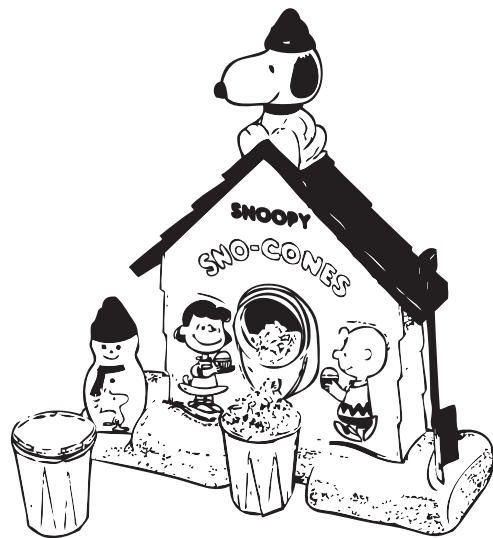
ADDITIONAL HINTS AND SUGGESTIONS

Additional packets of flavoring mix can be purchased at your supermarket or grocery store.

You can also try filling an ice cube tray with lemonade or any fruit juice and freezing it. Now, place the cubes, one at a time, into the machine and grate. This way you can make flavored snow with or without extra flavoring mix.



© 2009 Fundex Games, Ltd.
P.O. Box 421309 • Indianapolis, IN 46242
MADE IN CHINA
Questions or comments? Write to us at the address above, call 1.800.486.9787 or email customerservice@fundexgames.com
www.fundexgames.com
In an effort to continually improve our products, items may vary from those shown.



PEANUTS © United Feature Syndicate, Inc.
www.snoopy.com

Conforms to the safety requirements
of ASTM F963 and EN71