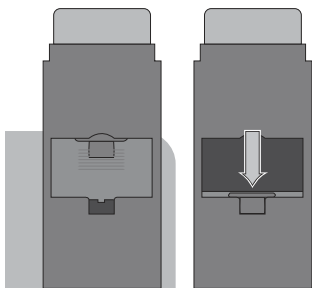




Thumb DECKS™

Instructions

the deck dealer™

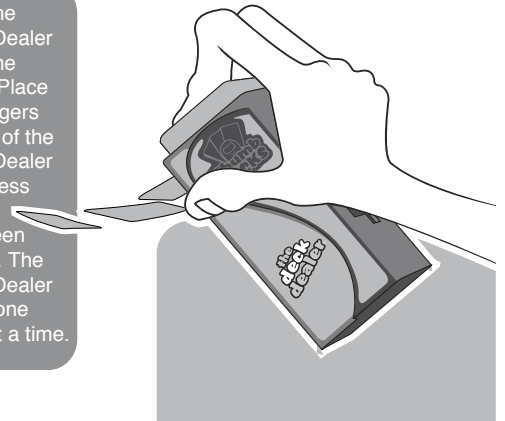


1 Find the door on the back of the Deck Dealer and slide it down to open.

2 Place the whole deck in the Deck Dealer from the back. Be sure to close the deck door before dealing.

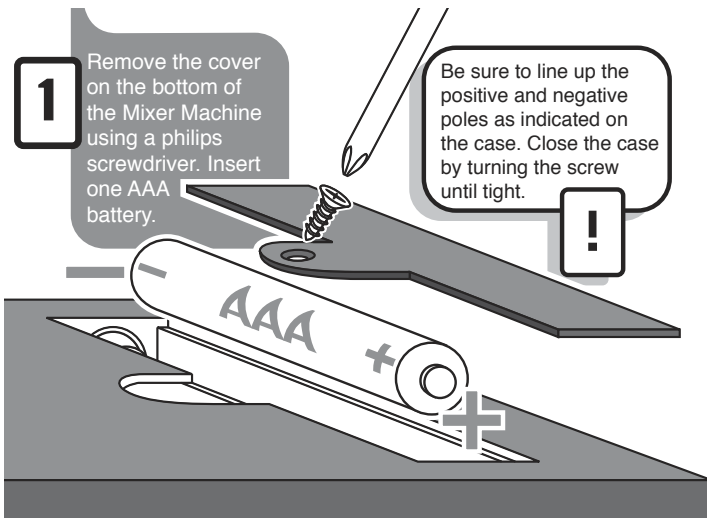


3 Hold the Deck Dealer with one hand. Place two fingers on top of the Deck Dealer and press the big green button. The Deck Dealer deals one card at a time.



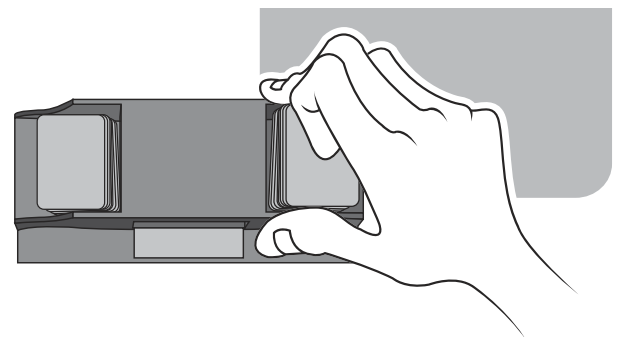
the mixer machine™

1 Remove the cover on the bottom of the Mixer Machine using a philips screwdriver. Insert one AAA battery.

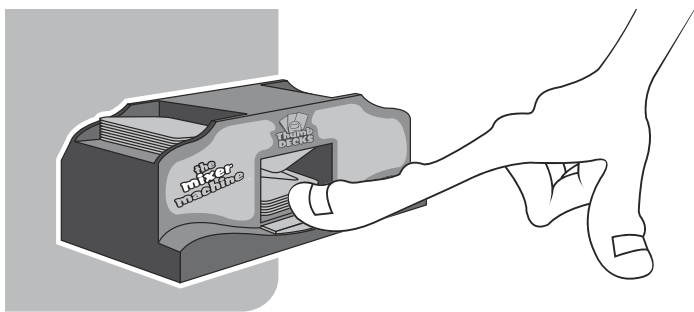


Be sure to line up the positive and negative poles as indicated on the case. Close the case by turning the screw until tight.

!



2 Gently drop the cards into the Mixer Machine from the top. Place half of the card deck on the left and half on the right.



3 Press the green button on the front of the Mixer Machine to shuffle the cards. The shuffled deck will be stacked inside the machine. Repeat three to four times to fully shuffle. Now you're ready to play!